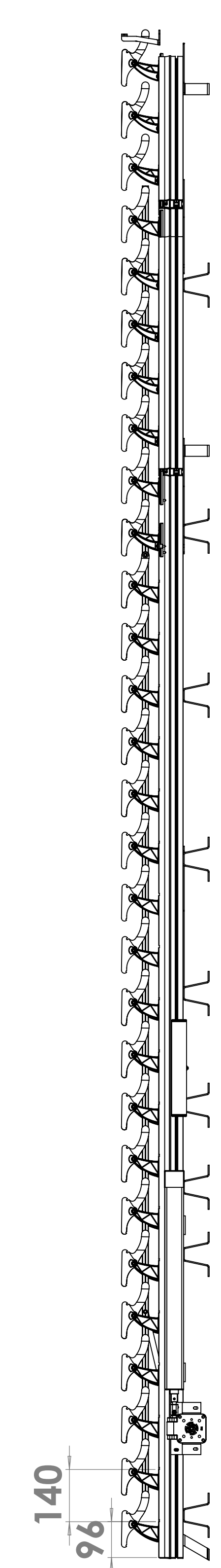
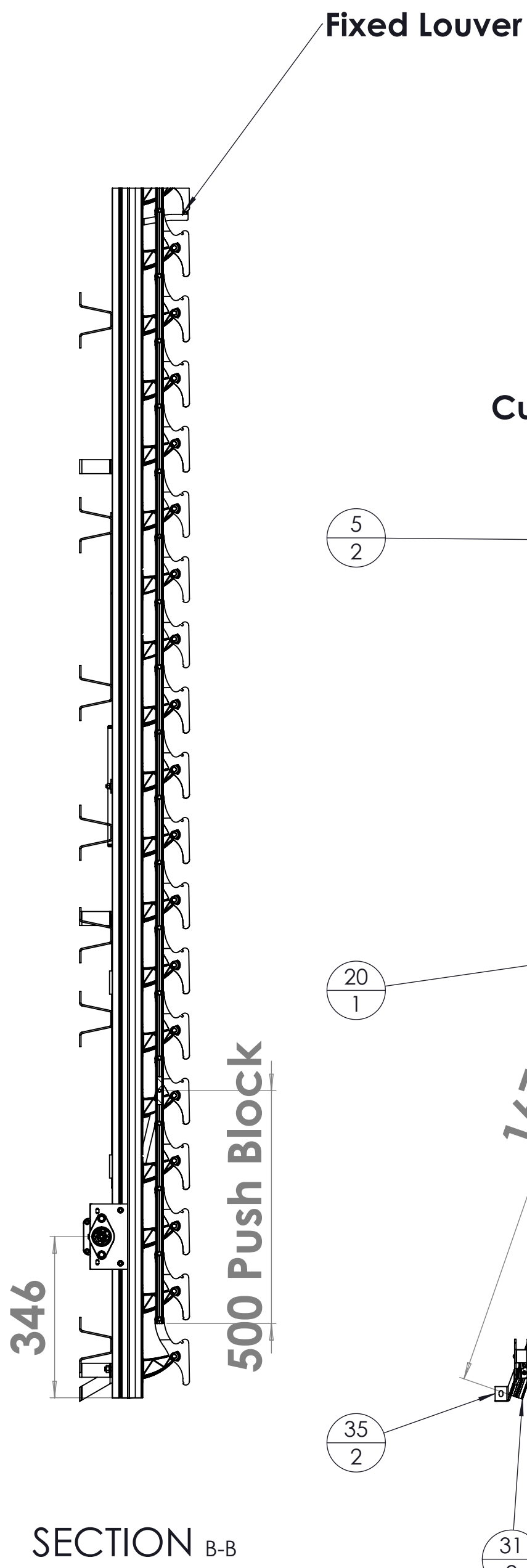
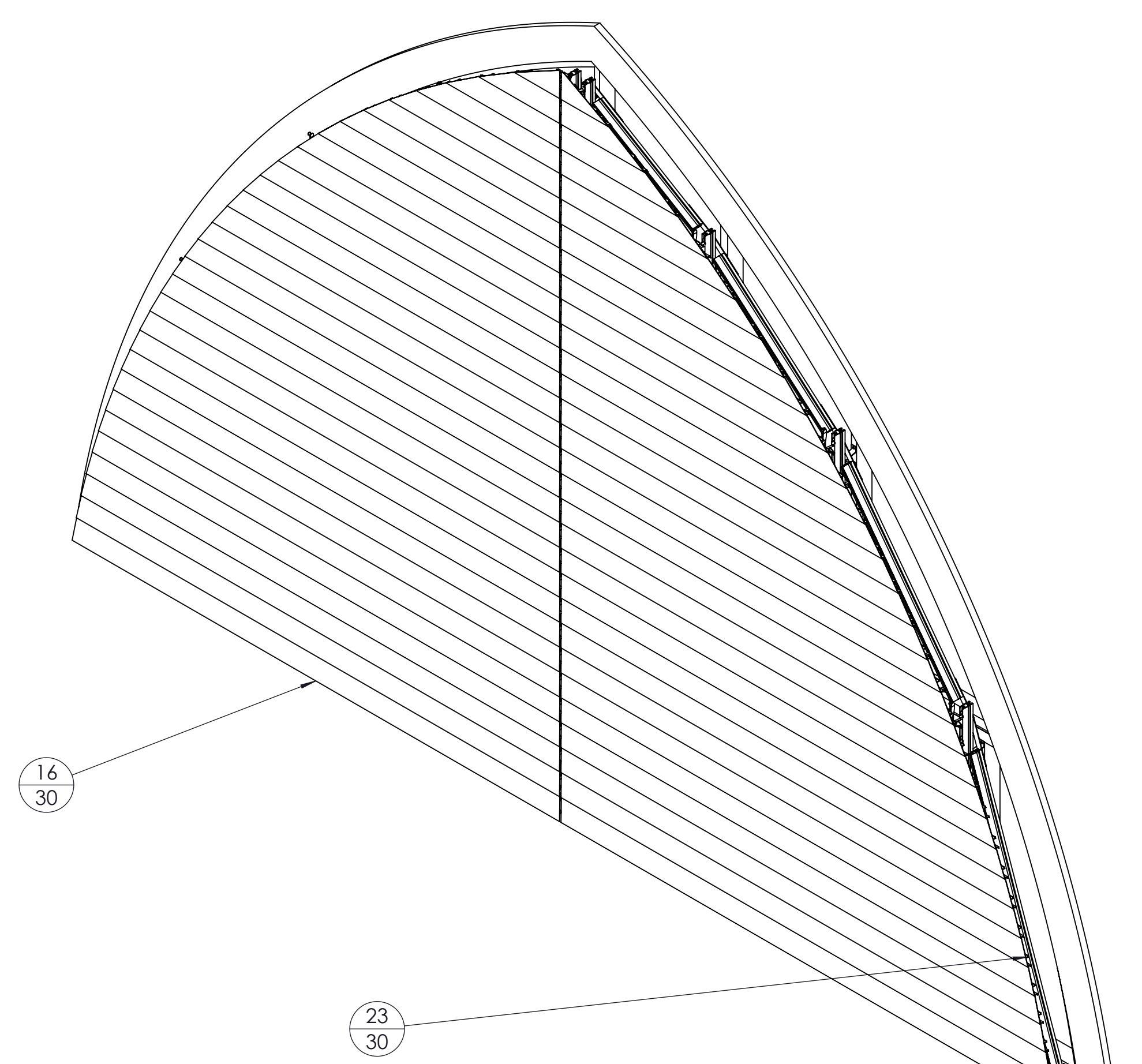
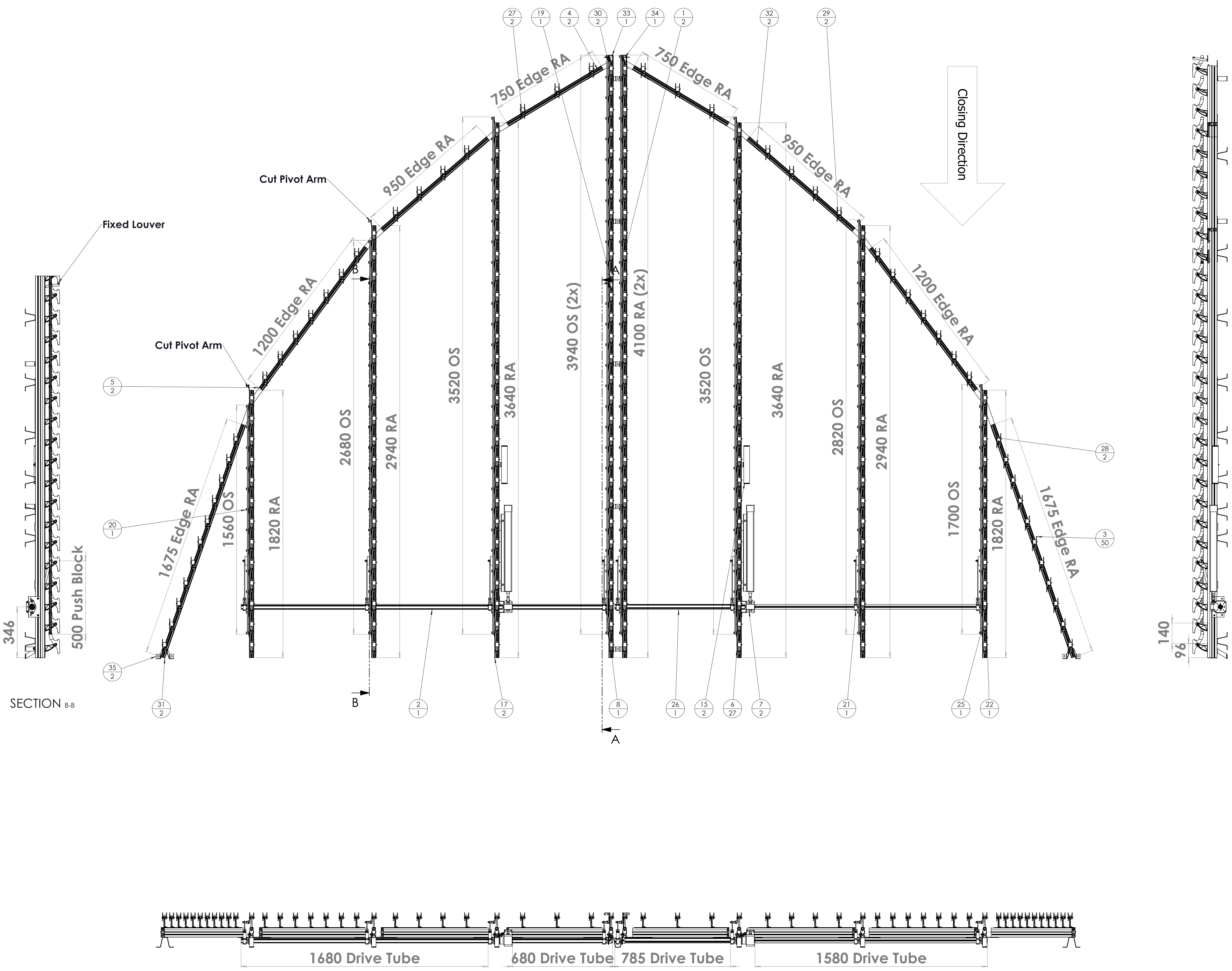


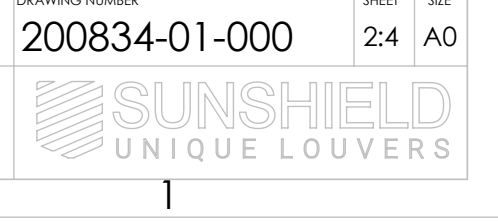
FASTENERS FOR INSTALLATION EXCLUDED (third party)				FASTENERS FOR SYSTEM ASSEMBLY INCLUDED			
MATERIAL							
CUSTOMER		DATE	14-10-2020	RACK ARMS & PARTS		RAL 7021 30% SD	
DESCRIPTION		SCALE	1:15	LOUVERS		RAL 7021 30% SD	
PROJECT NR	200834	ENGINEER	JM	PLASTIC PARTS		Black	
Customer's ID		QTY	1	STATE	Approved	200834-01-000	
NL 4941 V1		REV	01				
Project/Order/Order							
The Netherlands							

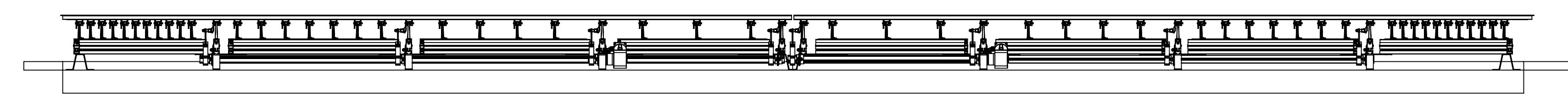
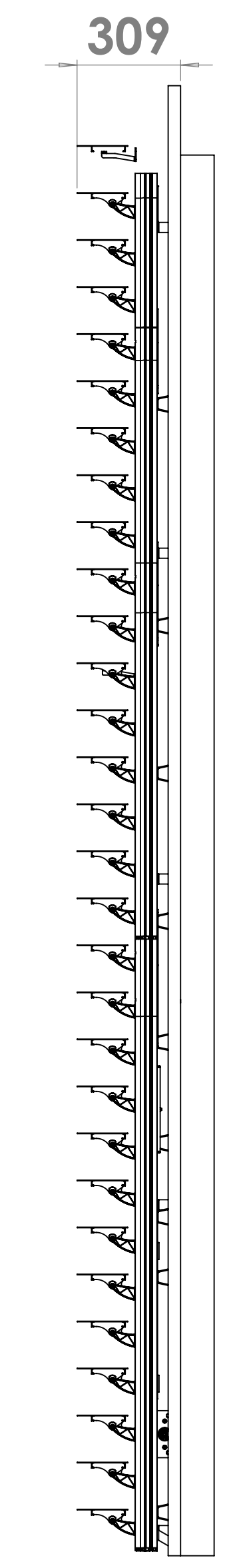
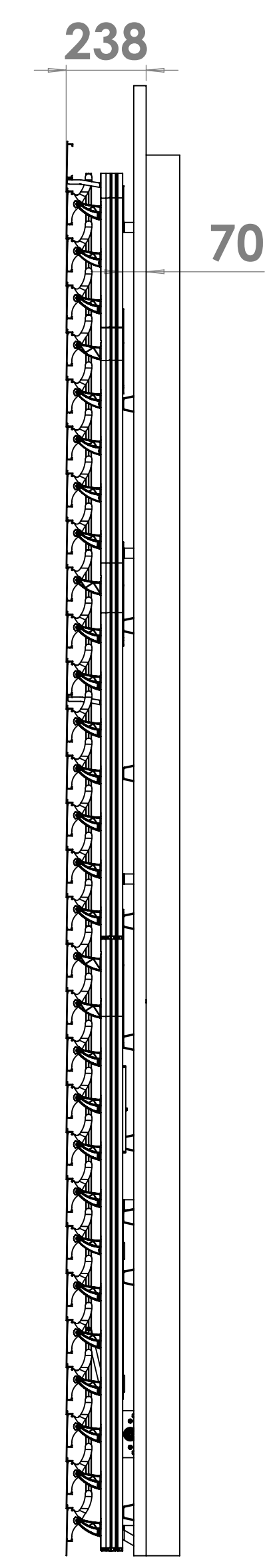
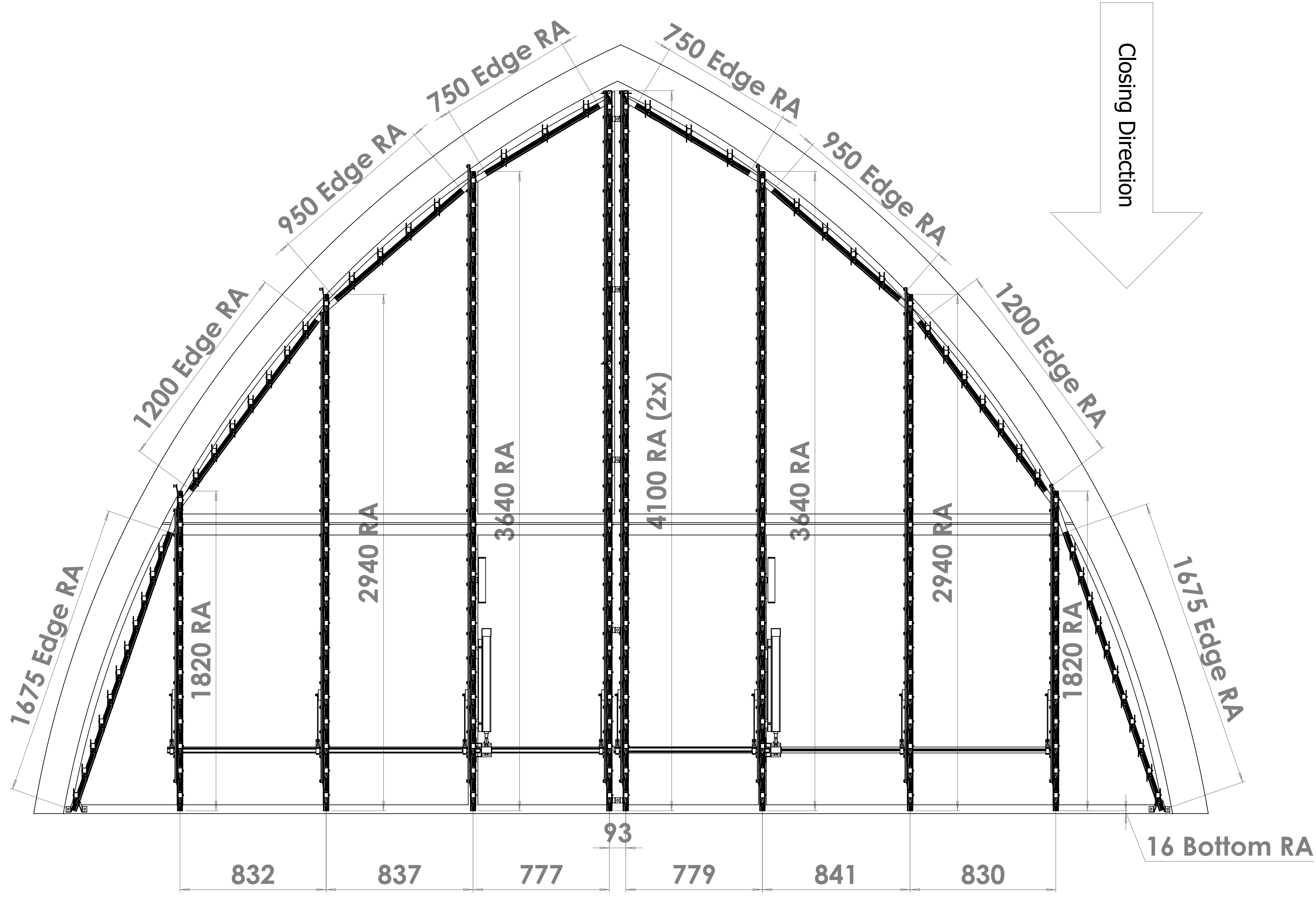
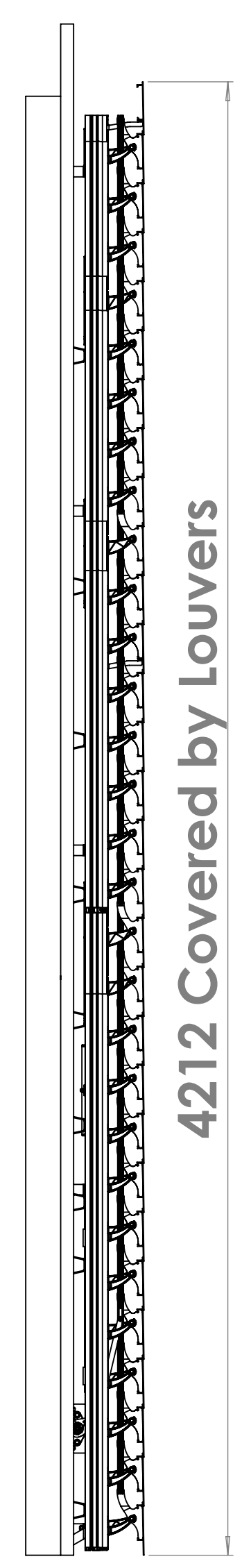
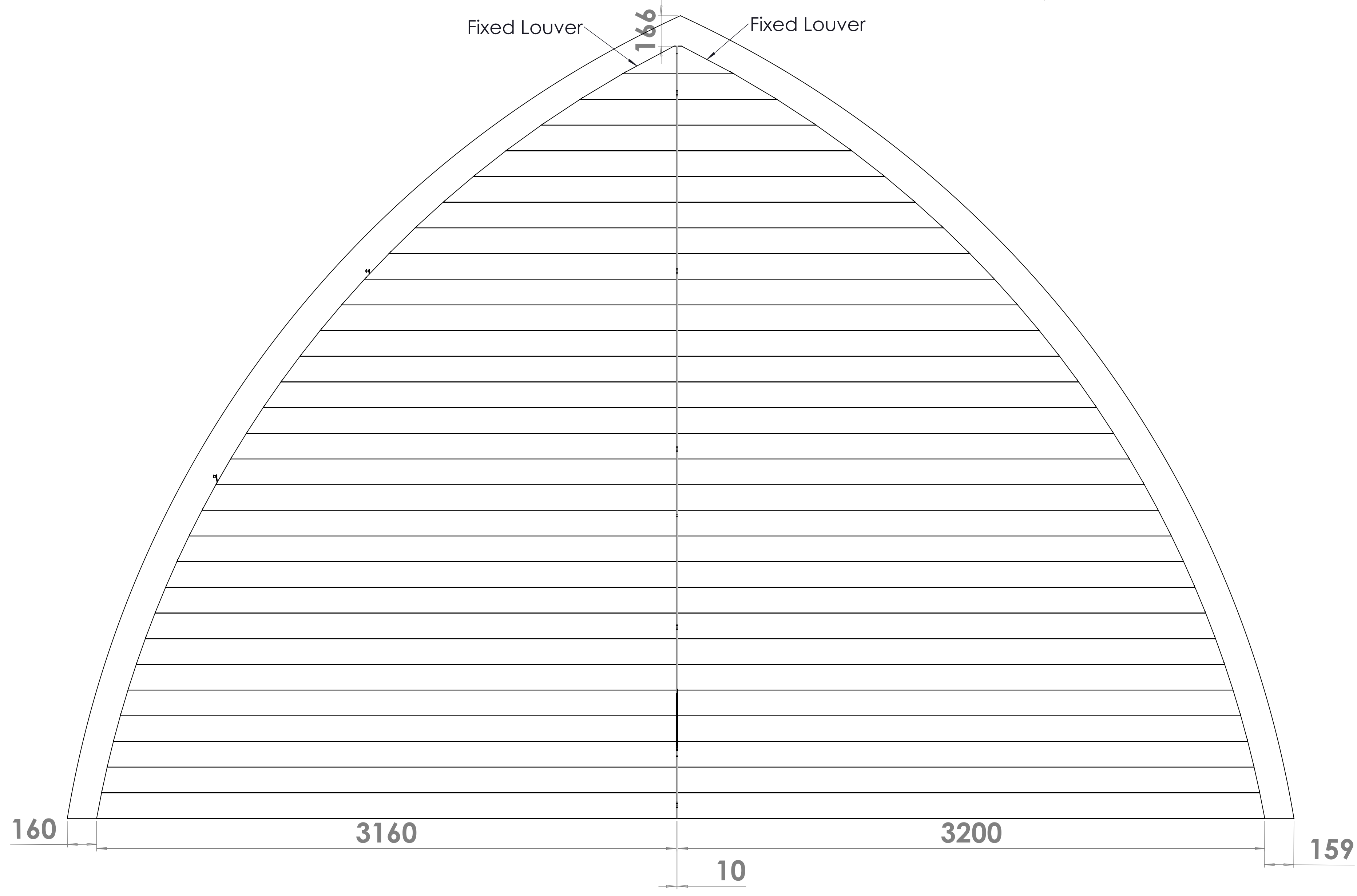




ITEM NO.	QTY.	SW-File Name (File Name)	DESCRIPTION	Comment 2
1	2	200834-01-100	Rack Arm 65 mm L-System, Pitch 140 mm (96)	L=4060 (96)
2	1	200834-01-501	Drive tube 35 mm	L=1680
3	50	45 361	Turnable pivot (Kit), L-System (incl. Statclip & screw)	
4	2	200834-01-202	Heavy Duty Edge Rack arm 65 mm	L=750
5	2	200834-01-203	Heavy Duty Edge Rack arm 65 mm	L=1200
6	27	14 620	Omega H-70-L, 28x68x31x68x28 x 3 mm, lg=30mm	L=30
7	2	45 813 22	Motor Kit 13:1 IO/RTS	
8	1	200834-01-502	Drive tube 35 mm	L=680
9	*70*	908	DIN 125-1A Plain Washer M8	
10	*70*	910	DIN 934 Hexagon Nut M8	
11	*70*	911	DIN 6798-A Lock washer M8	
12	*70*	Hamerkopbol-M8x20	Hamerhead bolt M8 x 20	
13	2	28 143	Somfy SUNEA SCR 40 IO, 13/10/230V, 5m white cable	
14	2	28 965	Hirschmann Set STAK/STAS-2 (Stak/Stas/clamp)	
15	2	58 988	Stak/Stas Protecting Kit (incl. Tube, Plugs & Bracket) (lg=250mm)	
16	30	200834-01-402	Louver 150E	L= See DWG
17	2	200834-01-100	Rack Arm 65 mm L-System, Pitch 140 mm (96)	L=3640 (96)
18	1	200834-01-100	Rack Arm 65 mm L-System, Pitch 140 mm (96)	L=2940 (96)
19	1	New Bracket Fixed Louver 155E	Bracket Fixed Louver	T=3
20	1	200834-01-100	Rack Arm 65 mm L-System, Pitch 140 mm (96)	L=1820 (96)
21	1	200834-01-100	Rack Arm 65 mm L-System, Pitch 140 mm (96)	L=2940 (96)
22	1	200834-01-100	Rack Arm 65 mm L-System, Pitch 140 mm (96)	L=1820 (96)
23	30	200834-01-403	Louver 150E	L= See DWG
24	1	28 161	Somfy Situo 1 IO Pure Transmitter, White	
25	1	200834-01-503	Drive tube 35 mm	L=1580
26	1	200834-01-504	Drive tube 35 mm	L=785
27	2	200834-01-301	Top Bracket	L=
28	2	200834-01-303	Top Bracket	L=
29	2	200834-01-302	Top Bracket	L=
30	2	14 603	Edge Rack Arm Connect-strip 3 holes for M8 (L/R)	
31	2	200834-01-204	Heavy Duty Edge Rack arm 65 mm	L=1675
32	2	200834-01-205	Heavy Duty Edge Rack arm 65 mm	L=950
33	1	14 972	Bracket Fixed Louver	T=3
34	1	14 986	Bracket Fixed Louver	T=3
35	2	Omega-70-60°	Omega H=70; Angle 60°	L=150 <sup>01</sup>

FASTENERS FOR INSTALLATION EXCLUDED (Inrd party)				FASTENERS FOR SYSTEM ASSEMBLY INCLUDED			
CUSTOMER	DATE	SCALE	1:10	RACK ARMS & PARTS	RAL 7021 30% SD	LOUVERS	RAL 7021 30% SD
DESCRIPTION	PROJECT NR	ENGINEER	JM	PLASTIC PARTS	Black		
200834	200834	QTY	1	200834-01-000	24	AD	
200834-01-000	200834-01-000	REV	01				

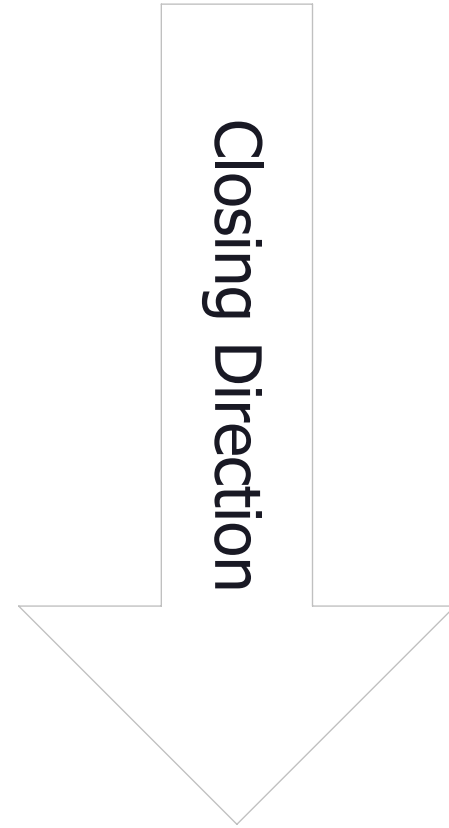
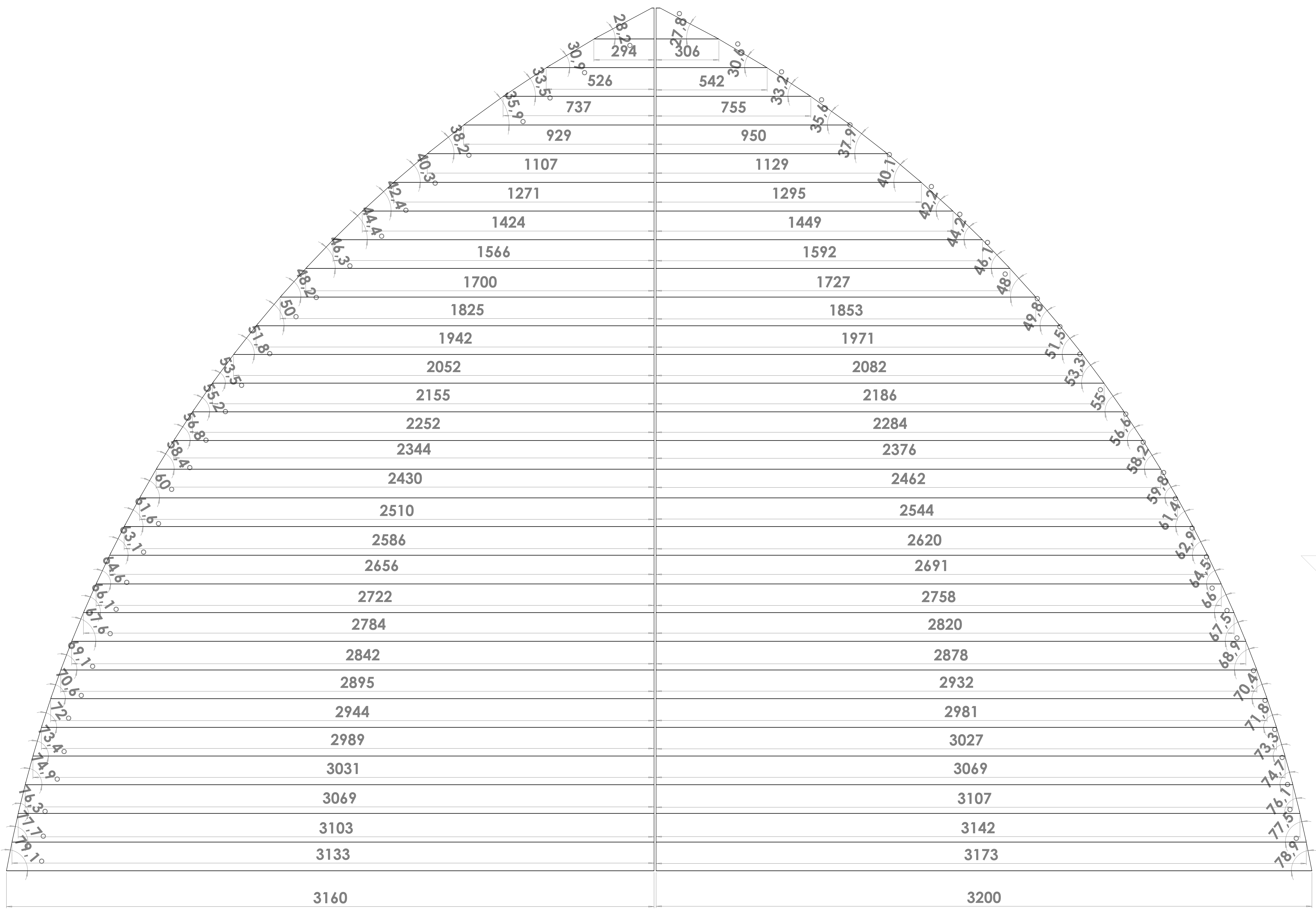




FASTENERS FOR INSTALLATION EXCLUDED (third party)				FASTENERS FOR SYSTEM ASSEMBLY INCLUDED			
MATERIAL				RACK ARMS & PARTS	RAL 7021 30% SD		
CUSTOMER		DATE	16-10-2020	LOUVERS	RAL 7021 30% SD		
DESCRIPTION		SCALE	1:15	PLASTIC PARTS	Black		
PROJECT NR	200834	ENGINEER	JM				
Issued by	200834	QTY	1	STATE	Approved	150E	200834-01-000
Checked by		REV	01				34 A0

FASTENERS FOR SYSTEM ASSEMBLY INCLUDED

SUNSHIELD  
UNIQUE LOUVERS



FASTENERS FOR INSTALLATION EXCLUDED (third party)				FASTENERS FOR SYSTEM ASSEMBLY INCLUDED			
MATERIAL							
CUSTOMER	DATE	16-10-2020	RACK ARMS & PARTS	RAL 7021 30% SD			
DESCRIPTION	SCALE	1:7.5	LOUVERS	RAL 7021 30% SD			
PROJECT NR	ENGINEER	JM	PLASTIC PARTS	Black			
200834	1	Approved	150E	Ext	200834-01-000	44	A0
200834	STATE	Approved					
REV	01						

