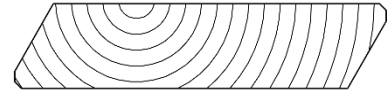


Product specification 68-W



Description	<p>Sunshield 68-W Non retractable louver blind, designed for internal and external installation to horizontal, vertical, sloping or unusual shaped windows. Sunshield systems are custom-made products.</p> <p>Construction The foundation of a Sunshield system is provided by rack arms, consisting of an aluminium designed bar with pivots, to which the louvers are clipped. Rack arms are available in several size, suitable for almost any situation. The operating strip connects all slat clips securing a smooth opening and closing of the blinds. The drive shaft is connected in the bearing bracket to the operating and link arm, moves the blind. Maximum span between rack arms is 1300 mm interior and 1200 mm exterior.</p>
Materials	<p>Louvers Type 68-W, wooden louver from Western Red Cedar, with a size of 68 mm and 16 mm thickness extremely rigid, for sun and light exclusion.</p> <p>Profiles Aluminium extrusion from alloy EN AW-6060 T66.</p> <p>Components Plastic components are made from nylon (PA6) or polypropylene (PP), and UV stabilised. Available in standard colours light grey (RAL 7035), black (RAL 9005), white (RAL 9010) and brown (RAL 8028).</p>
Surface	<p>Treatment All aluminium extrusion parts are natural anodised 18-20 micron, or RAL Polyester Powder Coating 60-80 mu – standard RAL colour range, or metallic and other special colours. All “Qualicoat” label.</p>
Controls	<p>Gearbox With detachable rod and handle.</p> <p>Electric motors Somfy motors; 230V - 100W, 0,5 amps, wire 4 x 0,75, max. motor temp. 140°C, max. area temp. -20/+40°C, provided with STAS/STAK plugs. On request, or when specifications require, other motor types can be specified.</p>
Technical data	<p>For specifications and dimensional details, see appropriate data sheets and full scale drawings, created for every project.</p>

The information provided in this document is general of nature. There are no representations or warranties of any kind with respect to the information contained in this document. Consult your sales representative for property ranges and min/max specifications for your situation and/or a custom made solution for a specific project.